

Auxiliary devices

1 Pad lock(PL)

To fix a ACB into a position (Dis-connected, Test, Connected)
* Standard offer in the draw-out type

2 Position Indicator

To indicate the position (Dis-connected, Test, Connected) of a ACB
* Standard offer in the draw-out type

3 Closing Coil (CC)

- To close the breaker by remote control
- The coil only operates when the power is supplied continuously over 100ms
- Power should be supplied separately from the motor charging power.
- Electric pumping prevent circuit is built in it.

Rated voltage(V)	Operational voltage(V)	Inrush current peak value(A)	Steady current(A)	Closing time(sec)
AC/DC 50/60Hz	110	94~121	2	0.08 under
	220	187~242	3	
DC	125	106~138	2.3	
	24	21~26V	30	
	48	41~53V	30	

- Note) 1. Closing time is from coil excitation to contact closing
2. Steady current is the value at maximum rated voltage
3. Please be careful that the pumping prevent circuit is reset when its voltage is under 85% of the rated voltage
4. The extent of operation voltage is 85~110% of the rated voltage

4 Shunt coil(SHT)

- To open the breaker by remote control
- Use an auxiliary contact(INO) to prevent coil burning
- When the control power is 'OFF' at the ACB is 'ON' state, the ACB remains 'ON'

Rated voltage(V)	Operational voltage(V)	Inrush current peak value(A)	Steady current(A)	Closing time(sec)
AC/DC 50/60Hz	110	77~121	2	0.04 under
	220	154~242	3	
DC	125	88~138	2.3	
	24	21~26V	30	
	48	41~53V	30	

Note) The extent of operation voltage is 70~110% of the rated voltage.

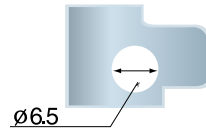
5 OCR Alarm contact

- OCR alarm contact is fundamentally installed in only ACB with trip relay. When the ACB is tripped by the OCR operation, electrical signal flows through the OCR alarm contact for remote supervisory(INO)
- Contact type

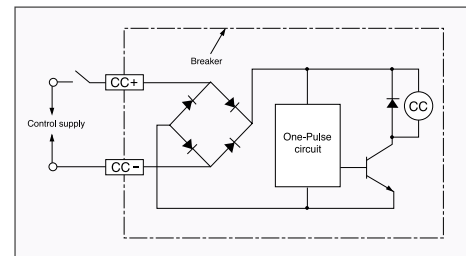
Type	OCR-II	OCR-III
Operational type	Momentary operation type (Under 15ms)	Magnetic maintenance type
Formation of contact	2NO	2NO

- Operating condition of contact

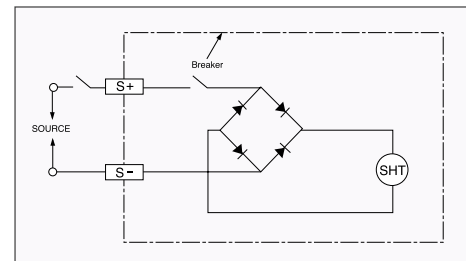
Condition of circuit breaker	Cause of trip	Condition of "a" contact
TRIP	Long-time delay trip, Short-time delay trip, Instantaneous-time delay trip, Ground fault trip	ON
	Trip button, Shunt trip coil(SHT), Undervoltage trip(UVT)	OFF
ON		OFF
OFF		OFF



- Pumping prevent circuit



- Trip coil circuit



- Contact capacity

Type	Capacity
Ratings	AC 250V 5A
	DC 30V 5A
Rated current	5A
Maximum contact voltage	AC 380V
	DC 125V
Maximum contact current	5A
Minimum applicable load	DC 5V 10mA